

## Seasonal Assessment – Spring 2024

First two months – March and April 2024

The following represents a provisional assessment of the weather experienced across the UK during the first two months of Spring 2024 (March and April) and how it compares with the 1991 to 2020 average.

The spring so far has been unsettled, very wet, and dull with a succession of frontal systems bringing rain and wind. There was a cold start to March (Benson in Oxfordshire recorded  $-4.6^{\circ}\text{C}$  on the 3<sup>rd</sup>) with snow falling on the 2<sup>nd</sup> across parts of south-west England causing disruption to travel. After the first few days March temperatures rose to well above average (a maximum of  $18.8^{\circ}\text{C}$  was recorded at Charlwood, Surrey on the 20<sup>th</sup>), until a short cold spell on the 27/28<sup>th</sup>, after which temperatures again warmed staying significantly above average through to mid-April (Santon Downham, Suffolk recorded  $20.9^{\circ}\text{C}$  on the 6<sup>th</sup> April). April was a month of two halves with temperatures in the second half of the month unseasonably cold, in stark contrast to the start of the month. Overall, UK temperatures have been close to average or slightly above for the first two months of spring.

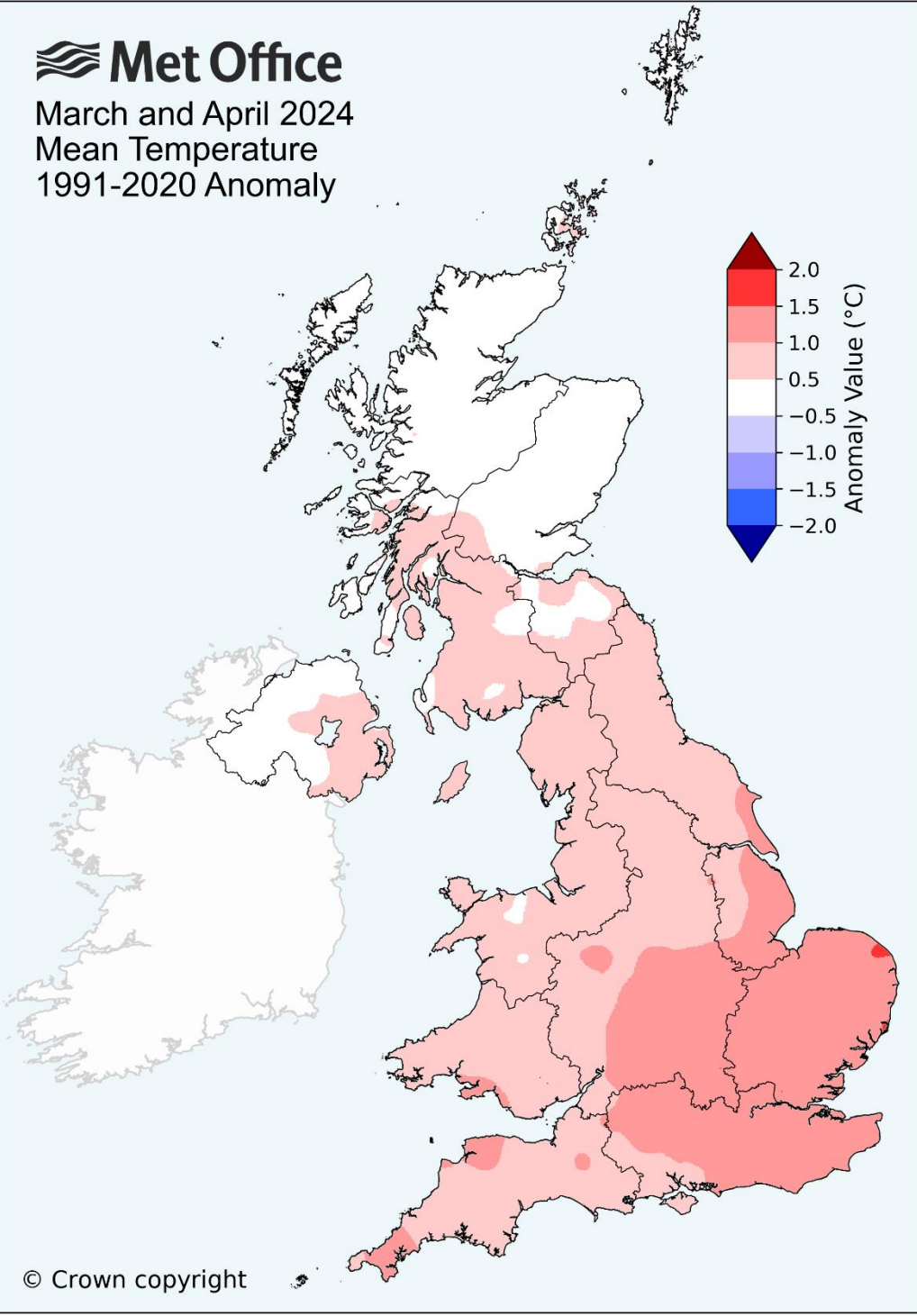
It has been a wet start to the season with heavy rain focussed on southern and central England in March, moving to northern England and Scotland in April, in both months areas of the country provisionally saw more than double the long-term average rainfall, although April did see some drier spells with a high-pressure system moving over the UK on the 20<sup>th</sup>, bringing drier weather but cool temperatures to much of the UK. By the 25<sup>th</sup>, low pressure was back bringing a return to the showery conditions. The season so far has been dull with 85-95% of average sunshine seen across the country and as low as 65% in some parts of the south of England and north Wales (provisional figures).

The eleventh named storm of the season, Kathleen, arrived on the 5<sup>th</sup>/6<sup>th</sup> April, bringing heavy rain to Scotland, Wales, parts of Northern Ireland, and the west coast of England. Kathleen also brought strong winds across the UK, with gales along coasts, particularly in the north and west of the UK.

UK statistical summary		
Mean temperature	Rainfall	Sunshine
The provisional mean value for March and April is $7.5^{\circ}\text{C}$ , which is $0.7^{\circ}\text{C}$ above the 1991-2020 average.	The provisional total for March and April is 219.2 mm, which is 139.8% of the 1991-2020 average.	The provisional total for March and April is 218.1 hours, which is 82.4% of the 1991-2020 average.



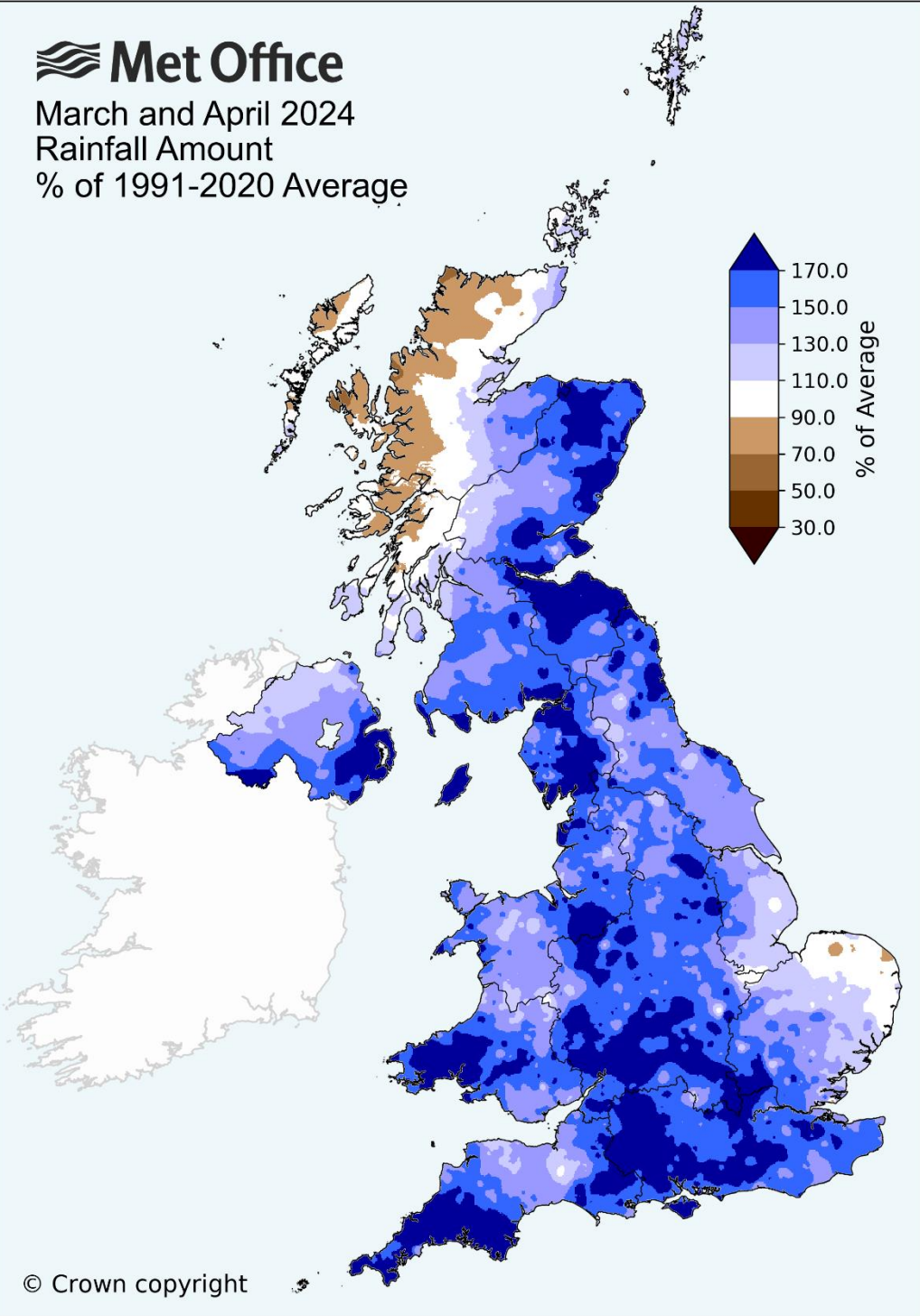
March and April 2024  
Mean Temperature  
1991-2020 Anomaly



© Crown copyright



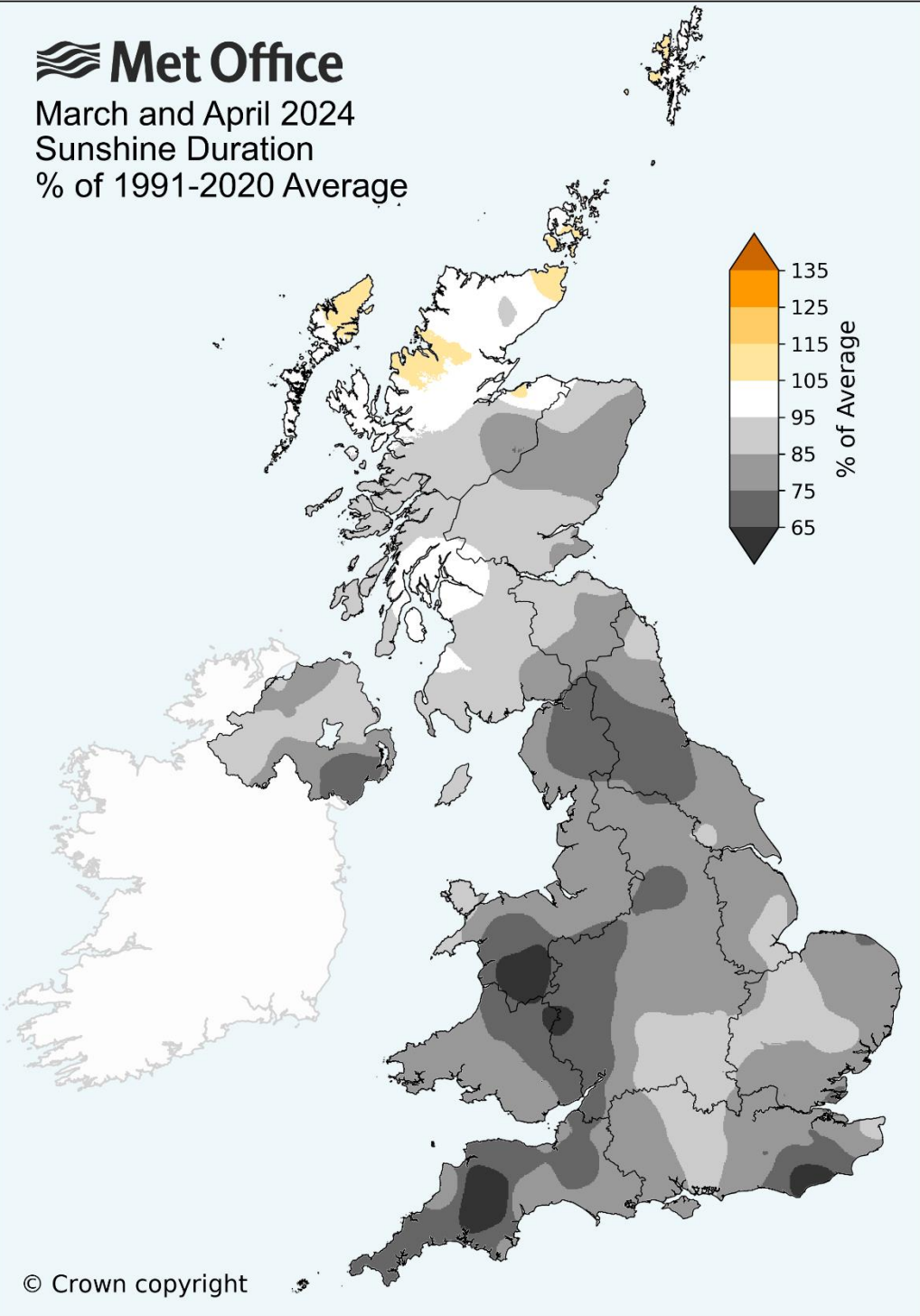
March and April 2024  
Rainfall Amount  
% of 1991-2020 Average



© Crown copyright

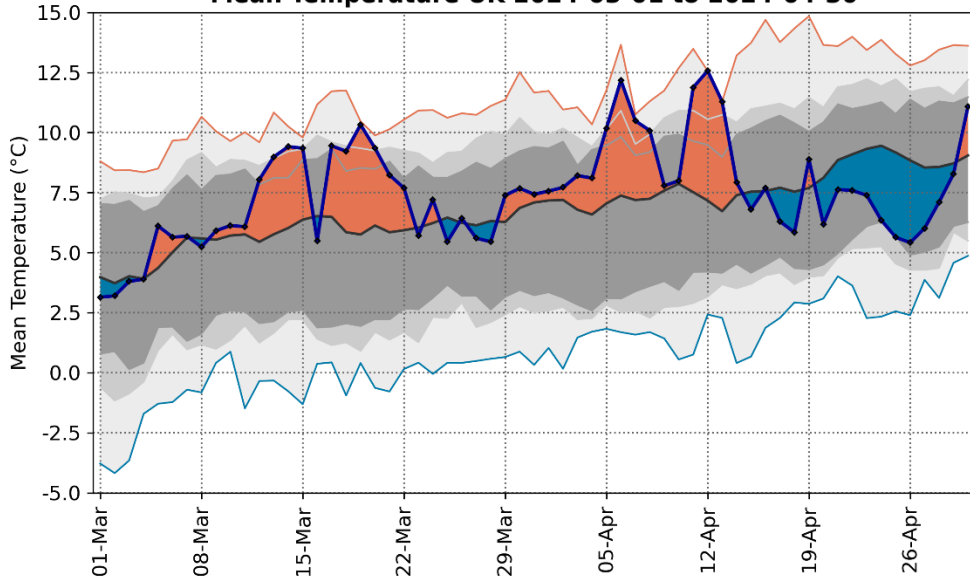


March and April 2024  
Sunshine Duration  
% of 1991-2020 Average



© Crown copyright

### Mean Temperature UK 2024-03-01 to 2024-04-30



— 1991-2020 — lowest — 5% — 10% — 90% — 95% — highest — seasonal